

LS7 series Key Changeable Cylinder



Outline of LS7 series

- High security cam lock with special key change mechanism for use in Vending Machines and Casino Gaming Devices.
- Superior operational performance and anti-picking due to the use of sidebar technology.
- Key codes can be changed on the fly with a simple turn of the old change key and then the new change keys.
- Lock dimensions are based on the Japan Vending Machine Manufacturers Association Standard S size, and also fits the U.S. Double "D" cut.
- Easy operation of keys with almost no binding on insertion and removal, thus reducing key wear and extending product life.
- When changing the key code on the lock, the tail and cam remain in the locked position, thus maintaining security and improving efficiency.
- Locks are shipped with a neutral position, thus can be stock and ready for immediate shipment.

Mechanical specification

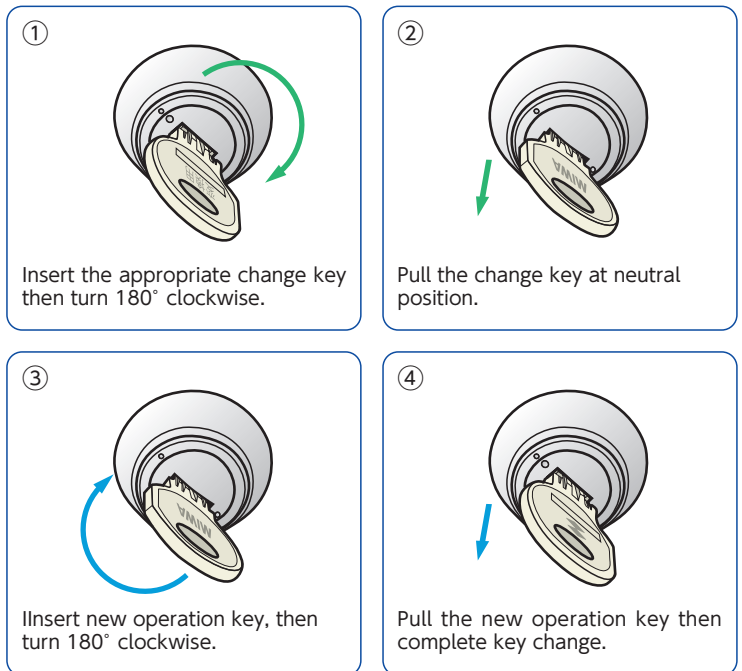
Cylinder

- Disk tumbler method with side bar (7 lines tumbler, 4 different increment)
- Practical key combinations: Approx 10,000
- Turning direction (R or L) can be changed in the field.

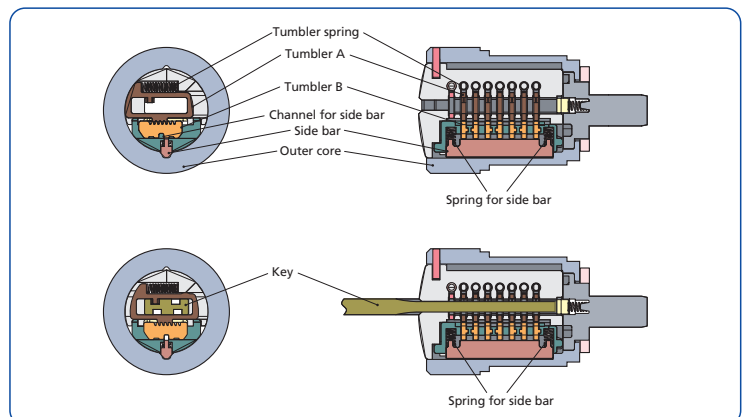
Key

- Patented key ward prevents unauthorized key duplication.
- User friendly reversible key for easy insertion.
- Keys are made of nickel-silver for increased durability.

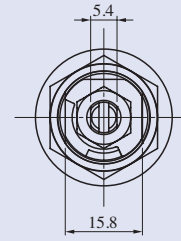
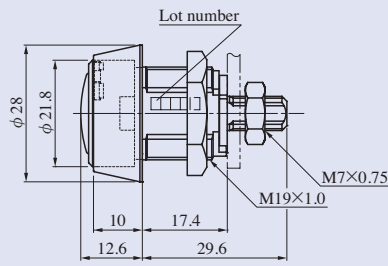
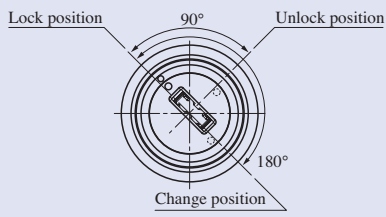
Easy 4 - step process for key changing



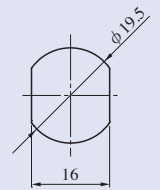
Mechanical structure of LS7



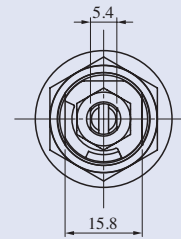
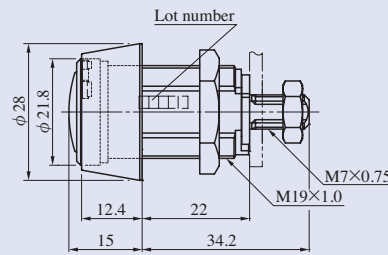
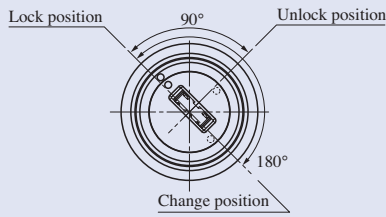
LS7-MSCYS



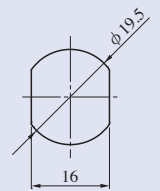
Door preparation



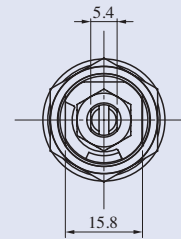
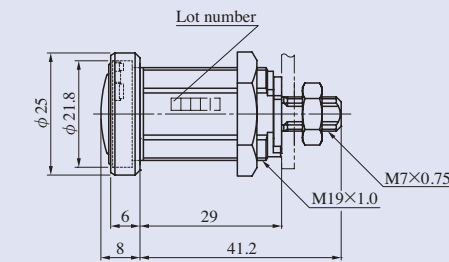
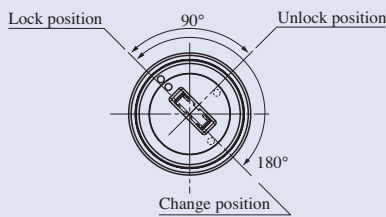
LS7-MSCYM



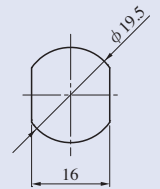
Door preparation



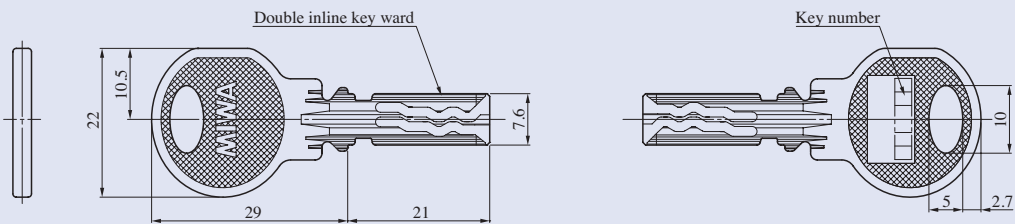
LS7-MSCYL



Door preparation



LS7-MNCK



MIWA LOCK CO., LTD.

Japan Head Office

3-1-12, Shiba, Minatoku, Tokyo 105-8510

URL : www.miwa-lock.biz

U.S.A. Sales Office

9272 Jeronimo, Suite 119, Irvine CA 92618

URL : www.miwalock.com/