

ALV2 (ALVB) P series/ LOCK (ANSI TYPE)

Handle & Color Variation



ALV2 (ALVB) UPHD476-3 (ST)



ALV2 (ALVB) UPHD66-3 (BS)

The pressed stainless steel escutcheon is available as standard in 6 high-quality finishes.

Type 478 Handle



Satin Chrome Finish (ST)
Key Override available as an option.

Type 66 Handle



Polished Chrome Finish (SB)

Type 476 Handle



Satin Brass Finish (BS)

Type 74 Handle



Polished Brass Finish (YB)

Type 476 Handle



Mid Bronze Finish (CB)

Type 66 Handle



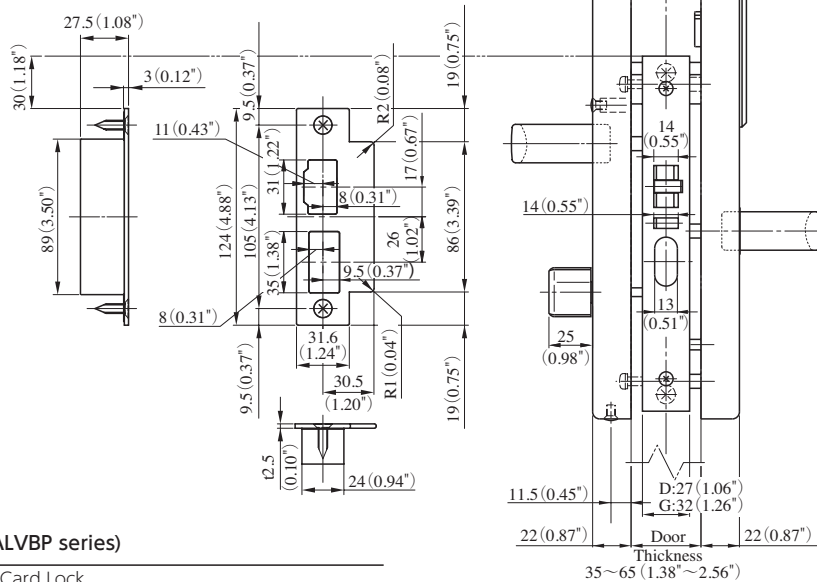
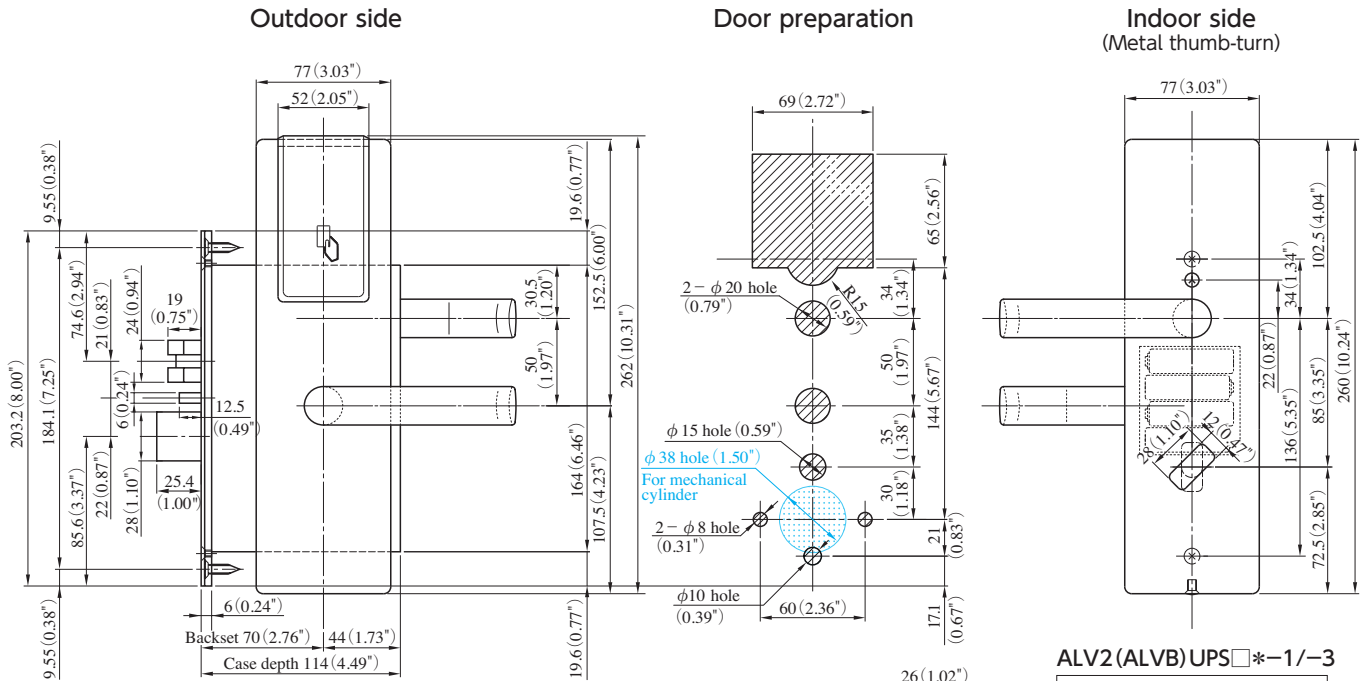
Matt Black Finish (BK)

MIWA LOCK CO., LTD.

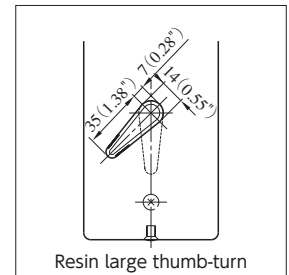
JAPAN 3-1-12, Shiba, Minato-ku, Tokyo 105-8510
URL: www.miwa-lock.biz

U.S.A 9272 Jeronimo, Suite 119, Irvine CA 92618
URL: www.miwalock.com

Detail Drawing



ALV2(ALVB)UPS□*~1/-3



Specifications (ALV2P/ALVBP series)

| | |
|---------------------|--|
| Product Name | Hotel Card Lock |
| Product Number | with cylinder : ALV2(ALVB)UPH□*~1 without cylinder : ALV2(ALVB)UPH□*~3 |
| Mountable Handles | 66 · 74 · 476 · 478 |
| Mountable Cylinders | U9 |
| Backset | 70mm |
| Material/Finish | Satin Chrome (ST) Polished Chrome (SB) Satin Brass (BS) Polished Brass (YB) Mid Bronze (CB) Matt Black (BK) |
| Door thickness | 35 ~ 65mm |
| Usability | Left-hand and right-hand usable (inward opening) |
| Power Supply | 4 AA alkaline batteries |
| Mobile key | only ALVB is available |

